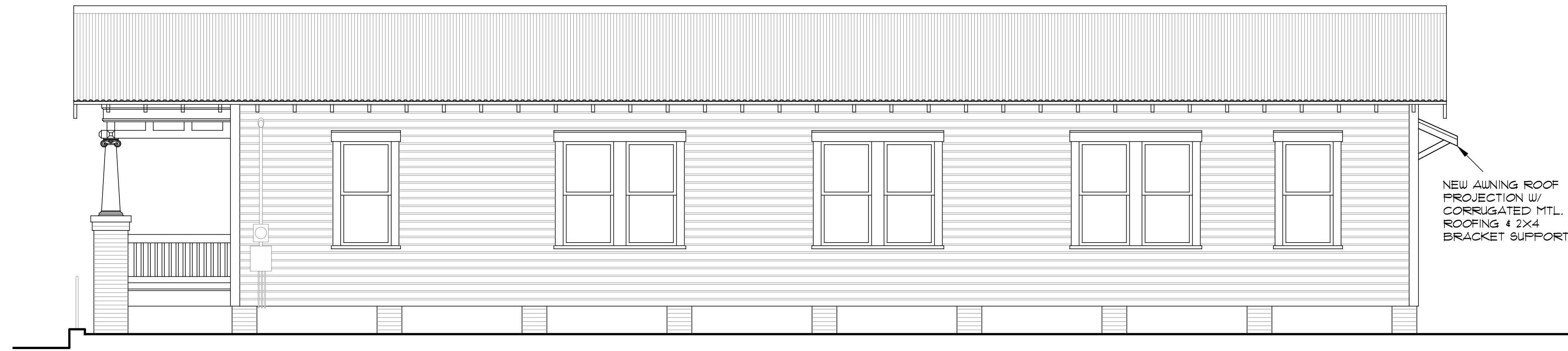


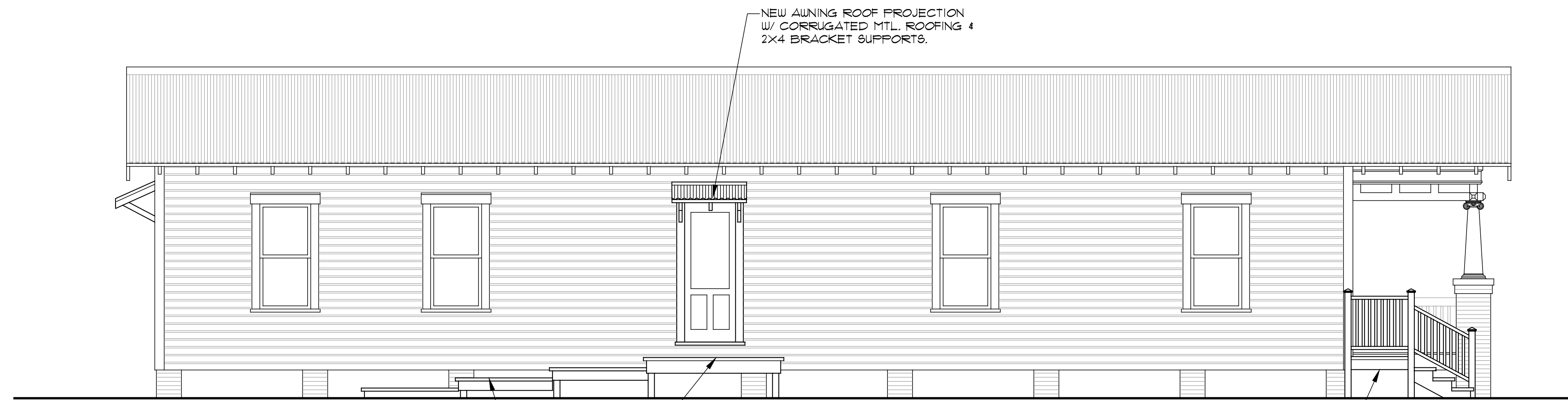
SQUARE FOOTAGE

EXIST. LIVING AREA (AC)	= 1,156 SF
EXIST. FRONT PORCH	= 122 SF
TOTAL UNDER ROOF	= 1,314 SF



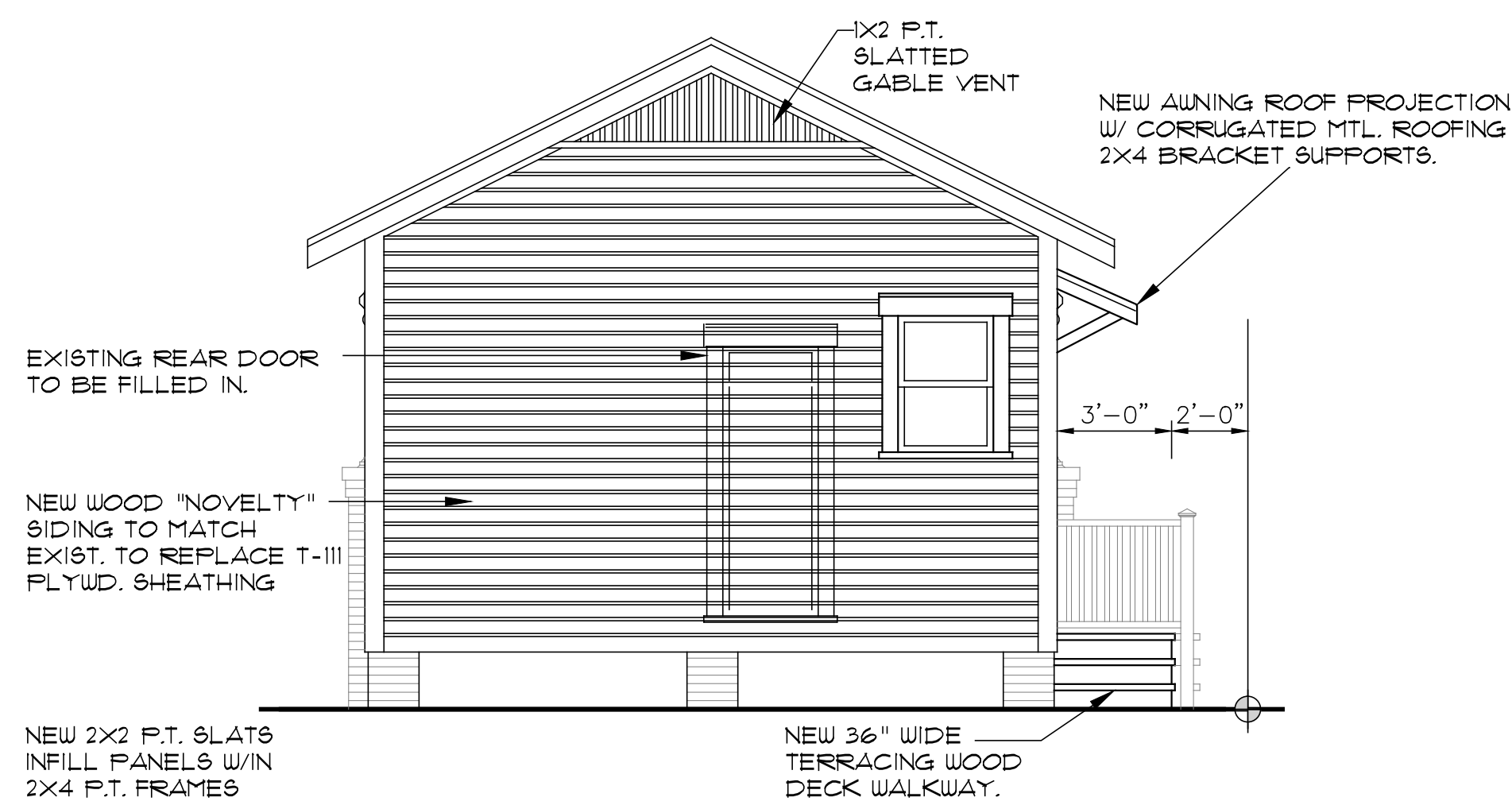
EAST ELEVATION

SCALE: 1/4" = 1'-0"



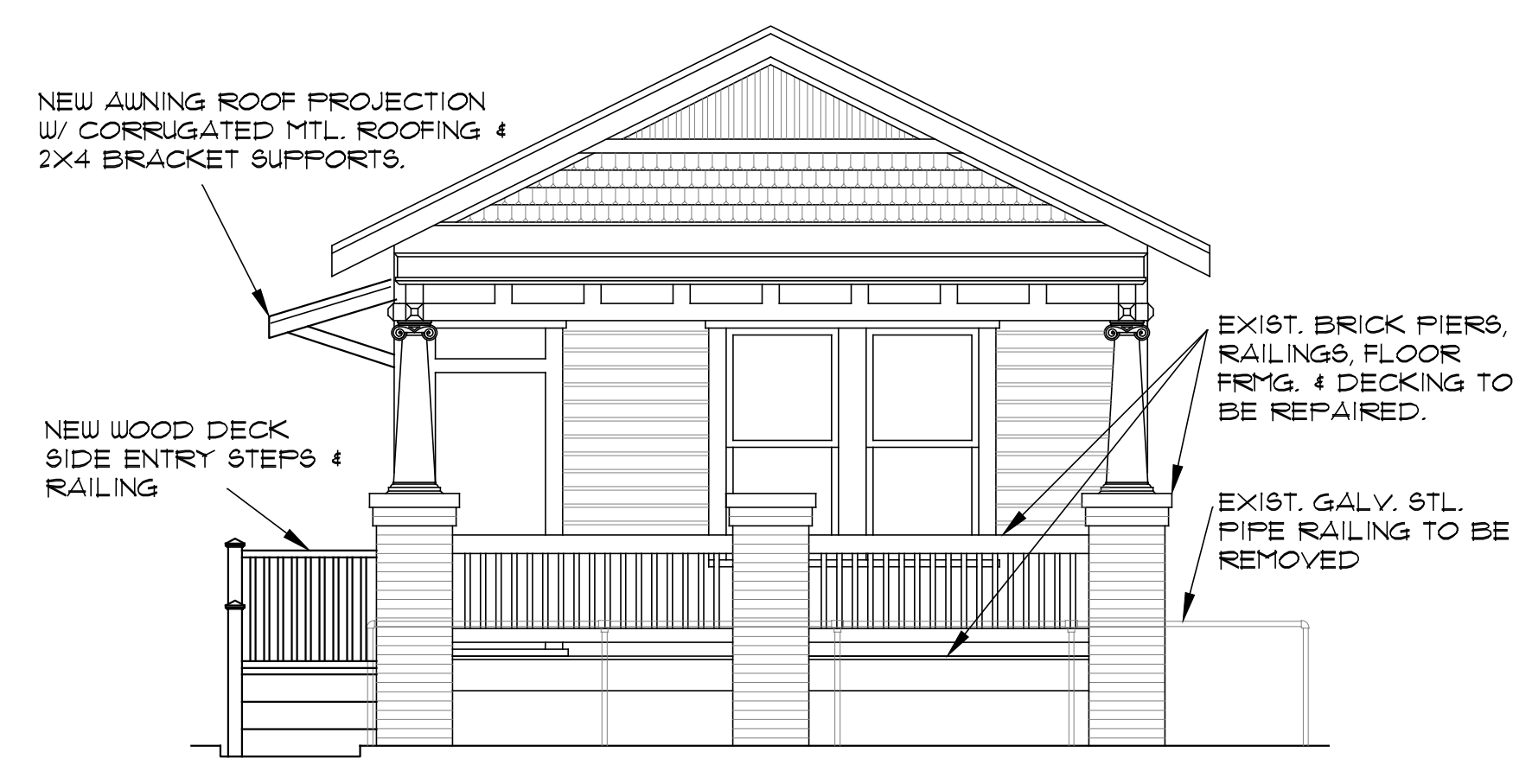
WEST ELEVATION

SCALE: 1/4" = 1'-0"



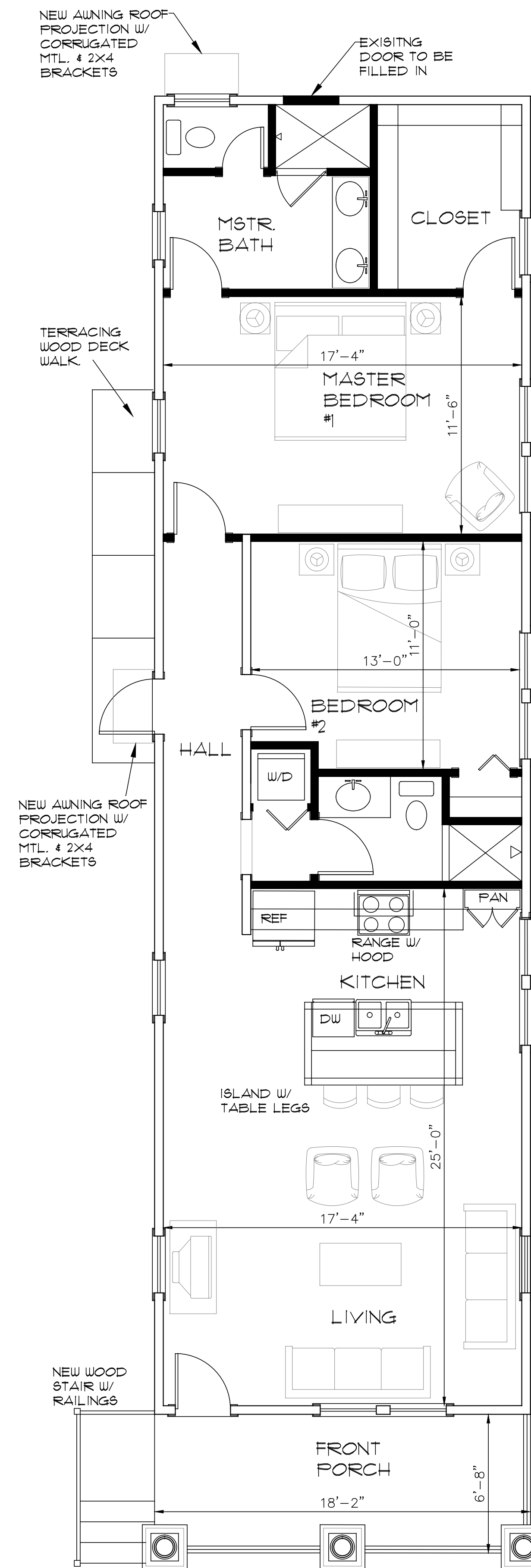
NORTH ELEVATION (REAR)

SCALE: 1/4" = 1'-0"



SOUTH ELEVATION (FRONT)

SCALE: 1/4" = 1'-0"



FLOOR PLAN

SCALE: 1/4" = 1'-0"

SCHEMATIC DESIGN

1820 E. 4TH AVENUE - YBOR CITY
RESIDENTIAL REMODEL/REHABILITATION



CURTS GAMES HALL JONES
ARCHITECTS
1213 E. 6TH AVE
YBOR CITY
TAMPA FLORIDA 33605
PHONE 813 228-8000
FAX 813 228-0770
FL CERT. #C0001590

JOB NO. 1816
DATE 10.7.2016
DRAWN BY MP
REV. 1
REV. 2
REV. 3
REV. 4

ARCHITECT OF RECORD
STEPHANIE D. GAINES
AR #0013031

SCHEMATIC PLANS

A1.01